

METAL VENT COVER ACCESSORIES

Because they should perform as beautifully as they look

From diffusers to air deflectors, mesh backing to concealment louvers, our cover accessories insure your covers not only look exquisite, but function flawlessly as well.

Each of our cover accessories is designed to fit behind our vent covers to control air flow, increase heating and cooling efficiently, conceal unsightly ductwork and ensure the optimal function of your vents.



LOUVER/DAMPER

Used on Supply grilles to control the flow of air from a particular vent. Dampers are attached to the frame on the back and operated with a flathead screw driver and recessed behind the face of the register to keep the beauty pristine.



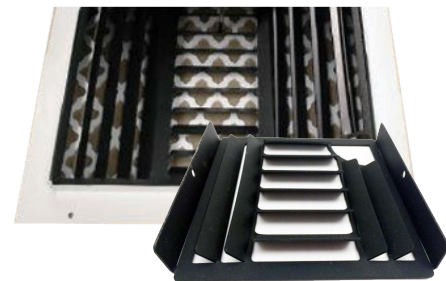
RETURN FILTER FRAME

Helps keep dust under control by trapping it before it can reach your living area. Filter Frame grilles come with a washable filter that is accessed by unscrewing the knobs on the front of the hinged front panel.



CONCEALMENT LOUVER

A valuable accessory for any return grille that helps block, or conceal, the unsightly ductwork behind the grille's face.



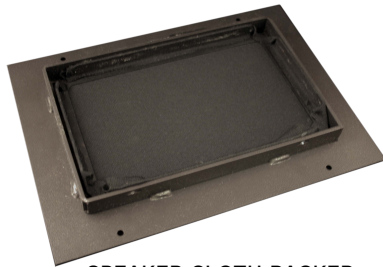
AIR DEFLECTOR/DIVERTER

Ideal for redirecting hot or cold air from supply vents. Hidden behind the grille, an air diverter redirects the air so its dispersed more evenly throughout the space. Available in 1-way, 2-way, 3-way and 4-way options.



BEVELED EDGE

Useful in softening the appearance of any supply or return, or simply preventing a stubbed toe on a floor grille.



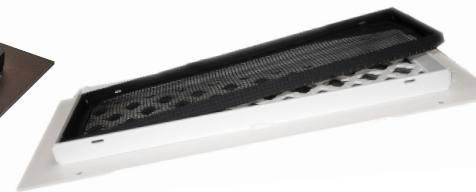
SPEAKER CLOTH BACKER

Offered in black or white, the speaker cloth backer transforms our grilles into amazing speaker covers in any size or shape.



SOLID BACKER

Blocks airflow and noise from a particular vent. Mounted on the back frame and powder coated black giving a void look behind the grille's face.



MESH BACKER

Typically used for foundation vents for outdoor areas where bugs may have access. The Mesh Backer keeps bugs and small rodents from accessing the vent.



FLUSHMOUNT CAN

The flushmount can allows covers to sit flush with the wall or ceiling giving them a streamlined elegant look and feel. Normally used for new construction, but may be installed in existing construction (time and patience required!) The can is secured to the studs and mudded to the drywall, then the decorative cover attaches to the can with strong magnets.

FOR MORE INFO...

On our cover accessories including sizing and specifications please call
1-844-567-5050.