

Vent+Cover

Custom Architectural Grilles and Registers

Vol. 3 2017



**Residential, Commercial
and Hospitality Projects**

***CUSTOM
PATTERNS
& SIZES
AVAILABLE***

**+ Finishing
Touches.**

1-844-567-5050 • WWW.VENTANDCOVER.COM

A modern interior space featuring a staircase with dark wood treads and a metal railing. Three pendant lights with a textured, conical design hang from the ceiling. A snake plant in a black pot sits on a light-colored tiled floor. The ceiling has two decorative vent covers with a geometric pattern. The walls are a mix of dark and light tones, with a large window in the background covered by horizontal blinds.

WHAT WE DO

Vent & Cover is committed to offering the largest selection of custom-designed, high-quality decorative products that are not only simple to install – they breathe life into unattractive fixtures, enhancing the appearance and value of your space.

Try adding one of our hand-cast vent covers to your home to create a stunning entryway or design your own custom architectural grills to create a gorgeous focal point.

If you can envision it, Vent & Cover can create it.

CALL NOW TO ORDER
844-567-5050

TABLE OF CONTENTS

4 [Metal Covers]

We build them like they used to

8 [Resin Covers]

Elegance within reach

10 [Technical Specifications]

Sizes, Colors and Patterns

12 [Wood Covers]

Discover your perfect design

14 [Vent Cover Accessories]

Because they should perform as beautifully as they look

15 [Commercial Products]

Commercial HVAC / Commercial Architectural Accents

16 [Baseboard Covers - Premium]

The easiest way to renovate old baseboard heaters

18 [Baseboard Covers - Basic]

Simple contemporary profile, Maximum value

19 [Baseboard Covers - Elliptus]

Baseboard Heaters Have Never Looked This Good

Shipping/Return Policy

WE SHIP WORLDWIDE

Baseboard cover orders are generally shipped within 5-7 business days and are delivered via FedEx.

All of our vent covers are custom made to order, thus they do have a longer lead time. Most standard size wood and resin covers have a lead time of 2 weeks while our metal covers may take up to 4 weeks to produce.

Expedited deliveries can be arranged for an additional fee.

RETURNS

Returns accepted on baseboard covers only. As our vent covers are custom-made to order we cannot accept returns or refunds.

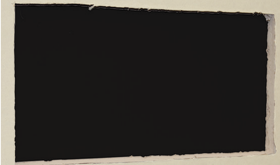
How to Measure Vent Covers in 4 Easy Steps

All of our vent covers are listed based on inside dimensions, to find your correct inside dimensions follow the steps below:



1

If possible, remove the existing vent cover from the wall, ceiling or floor. If the existing cover can't be removed, please ask for assistance.



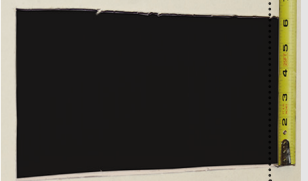
2

Now that you have removed the cover and your rough wall opening is exposed use a measuring tape to measure the width of the ductwork in inches.



3

Next, measure the height of the ductwork in inches. Be sure to express the width measurement before the height measurement in inches.



4

If the rough opening measures 10 inches wide by 4 inches high, the correct size cover to order will be 10 x 4 inches.



Note: The vent cover's overall size, including border, will be larger than the duct opening. This ensures that the border will fit flush on the finished surface and cover the rough opening. This outer border will house the various screw holes used to securely attach your cover, if applicable.



METAL COVERS

We build them like they used to

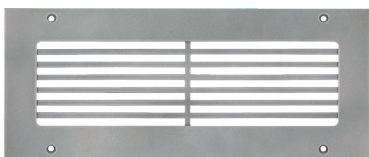
Drawing inspiration from fine homes, historical landmarks and commercial properties throughout the world, we have created a carefully selected range of historically accurate as well as modern and contemporary designs.

All of our metal vent covers are individually crafted to provide a thicker, stronger, more durable product that will last for a lifetime. You'll fall in love with the intricate design, quality and craftsmanship of each piece.

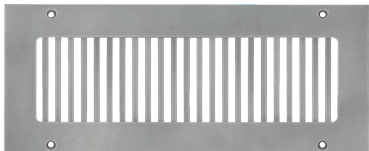
PRO SERIES

Steel

PRO-LINEAR



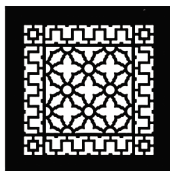
PRO-VERTICAL



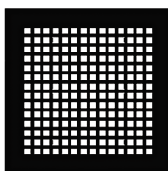
CLASSIC SERIES

Aluminum / Steel / Cast Iron

SCROLL



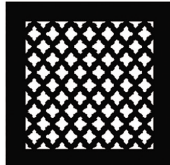
SQUARE



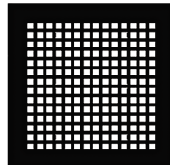
BRONZE SERIES

Steel

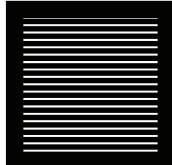
TUSCAN



SQUARE



SLOTTED



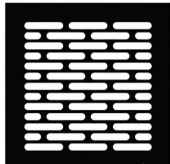
SILVER SERIES

Steel

TUSCAN



VOGUE



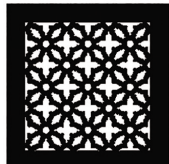
CORINTHIAN



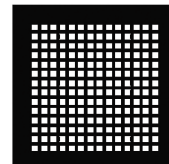
RENAISSANCE



TRADITIONAL



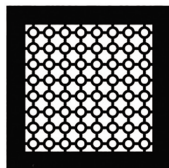
SQUARE



GOLD SERIES

Steel

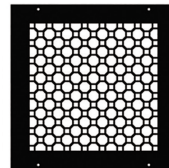
CASTLE



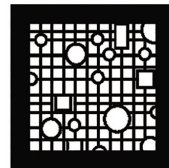
CLASSIC



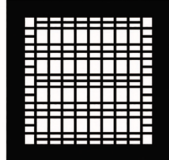
COBBLESTONE



CONTEMPORARY



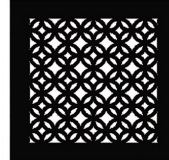
MISSION



MOUNTAIN



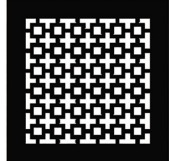
OMNI



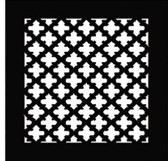
PINECONE



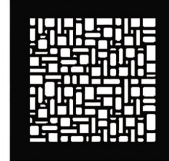
SANTA FE



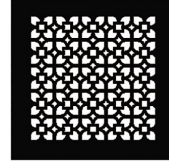
REGENCY



STONEWALL



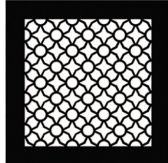
ROYAL PALM



PRESIDENTIAL



EXPO



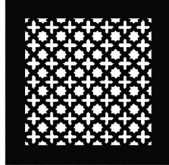
GOthic



HERRINGBONE



VICTORIAN



VINE



VINEYARD



For color options
visit page 7.

See Page
14
For
Accessories

Metal

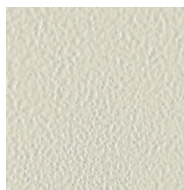




COLOR SWATCHES



ANTIQUE-BRONZE



BEIGE



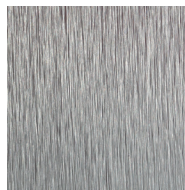
BLACK



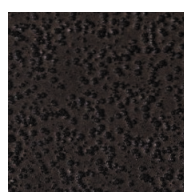
BRONZE



BROWN



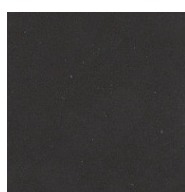
BRUSHED STAINLESS STEEL



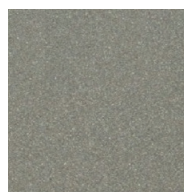
COPPER CLAD



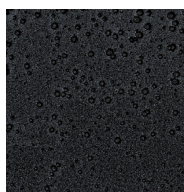
DARK ROAST



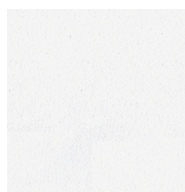
OIL RUBBED BRONZE



SILVER



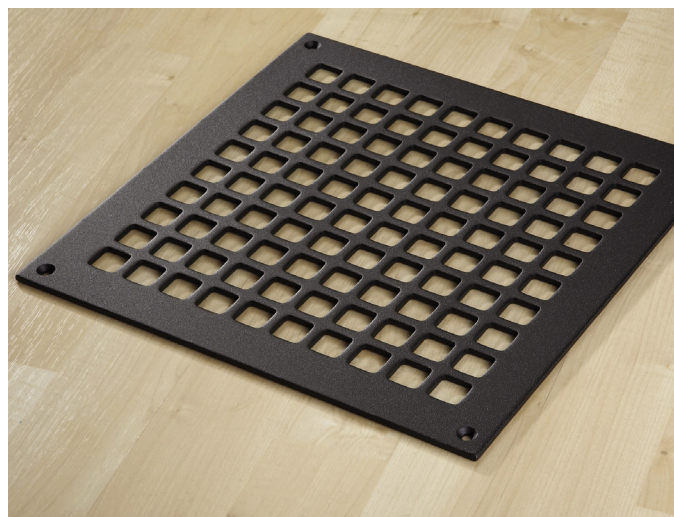
SILVERADO



WHITE

NEED A CUSTOM OR VINTAGE PATTERN?

We can laser cut anything that you can draw. We can work with most design files including: AutoCAD, Corel Draw, and Adobe Illustrator. Or, you can email a photo or fax a drawing.



DID YOU KNOW >>>

Our vent covers can be used outside.

We recommend the aluminum or resin covers for outdoor use because they are rustproof and fare better in humid environments.



RESIN COVERS

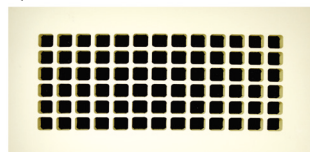
Elegance within reach

Decorative resin vent covers are quickly becoming a popular economical option for walls and ceilings in homes and businesses everywhere. Using a cold casting process with custom created molds we are able to create a range of unique three-dimensional patterns that

really stand out. Our resin covers are available unfinished so you can paint or stain them to match any décor. Why not mimic marble, steel, stone or even wood? The options are endless!

RESIN TYPES

SQUARE



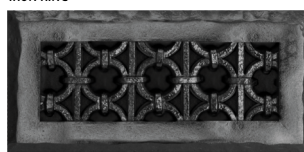
RIBBON



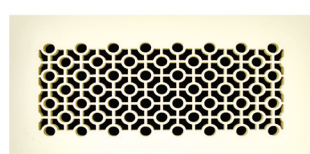
HERITAGE DECORATIVE



IRON RING



COSMO



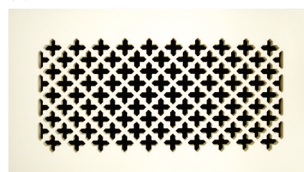
LINEAR



HERITAGE FLAT



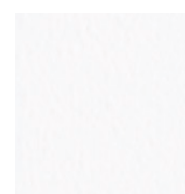
CASPIAN



FINISHES



DARK OIL RUBBED BRONZE



WHITE



BLACK



DIY PAINT IT YOURSELF

Choose from one of our standard powder coat finishes, or use your own!

Note: Unfinished covers are NOT white; they are a light egg-shell color and are intended to be painted.

NEED A DAMPER FOR YOUR VENT COVER?

Any of our Resin covers can be made into a supply vent cover with the addition of one of our attachable dampers. For resin cover accessories visit page 14.

DID YOU KNOW >>>

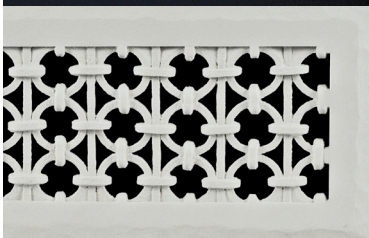
Our unfinished vent covers have unlimited options for finishes. You (or we) can paint/stain them to match any decor. Mimic marble, steel, stone, wood or almost any other material you like--the options are endless.

Resin

QUICK FACTS

Looking for something unique?

Our high-quality NASA-developed thermal resin is not only heat and moisture resistant but elegant and eco-friendly, too.



VENT COVER SPECIFICATIONS

Sizes, Colors and Patterns

All dimensions are in inches

METAL	STYLES	FINISHES	SIZE / inside	SIZE / outside	SIZE / inside	SIZE / outside	SIZE / inside	SIZE / outside	SIZE / inside	SIZE / outside	SIZE / inside	SIZE / outside
METAL	Pro-Linear	Silver Steel	6 x 6	8 x 8	12 x 4	14 x 6	18 x 6	20 x 8	30 x 8	32 x 10	10 x 11	12 x 13
	Pro-Vertical	Black Steel	8 x 8	10 x 10	16 x 4	18 x 6	20 x 6	22 x 8	36 x 8	38 x 10	14 x 12	16 x 14
		White Steel	9 x 9	11 x 11	18 x 4	20 x 6	22 x 6	24 x 8	40 x 8	42 x 10	16 x 12	18 x 14
		Brown Steel	10 x 10	12 x 12	20 x 4	22 x 6	24 x 6	26 x 8	42 x 8	44 x 10	18 x 12	20 x 14
		Oil Rubbed Bronze	12 x 12	14 x 14	24 x 4	26 x 6	28 x 6	30 x 8	48 x 8	50 x 10	20 x 12	22 x 14
		Brushed Stainless Steel	14 x 14	16 x 16	30 x 4	32 x 6	30 x 6	32 x 8	60 x 8	62 x 10	22 x 12	24 x 14
			16 x 16	18 x 18	36 x 4	38 x 6	36 x 6	38 x 8	72 x 8	74 x 10	30 x 12	32 x 14
			18 x 18	20 x 20	40 x 4	42 x 6	48 x 6	50 x 8	12 x 10	14 x 12	20 x 14	22 x 16
			20 x 20	22 x 22	42 x 4	44 x 6	60 x 6	62 x 8	14 x 10	16 x 12	24 x 14	26 x 16
			24 x 24	26 x 26	48 x 4	50 x 6	72 x 6	74 x 8	16 x 10	18 x 12	25 x 14	27 x 16
			10 x 2 1/2	12 x 4 1/2	60 x 4	62 x 6	10 x 8	12 x 10	18 x 10	20 x 12	30 x 14	32 x 16
			12 x 2 1/2	14 x 4 1/2	72 x 4	74 x 6	12 x 8	14 x 10	20 x 10	22 x 12	20 x 16	22 x 18
			14 x 2 1/2	16 x 4 1/2	8 x 6	10 x 8	14 x 8	16 x 10	24 x 10	26 x 12	24 x 16	26 x 18
			10 x 3	12 x 5	10 x 6	12 x 8	16 x 8	18 x 10	30 x 10	32 x 12	30 x 16	32 x 18
			6 x 4	8 x 6	12 x 6	14 x 8	18 x 8	20 x 10	36 x 10	38 x 12	25 x 20	27 x 22
			8 x 4	10 x 6	14 x 6	16 x 8	20 x 8	22 x 10	48 x 10	50 x 12	30 x 20	32 x 22
			10 x 4	12 x 6	16 x 6	18 x 8	24 x 8	26 x 10	60 x 10	62 x 12	40 x 20	42 x 22
	Corinthian	White Steel	6 x 6	8 x 8	14 x 4	16 x 6	36 x 6	38 x 8	10 x 11	12 x 13	6" Round	8" Round
	Renaissance	Black Steel	8 x 8	10 x 10	18 x 4	20 x 6	48 x 6	50 x 8	14 x 12	16 x 14	8" Round	10" Round
	Square	Brown Steel	9 x 9	11 x 11	20 x 4	22 x 6	10 x 8	12 x 10	16 x 12	18 x 14		
	Traditional	Silver Steel	10 x 10	12 x 12	24 x 4	26 x 6	12 x 8	14 x 10	18 x 12	20 x 14		
	Tuscan	Oil Rubbed Bronze	12 x 12	14 x 14	30 x 4	32 x 6	14 x 8	16 x 10	20 x 12	22 x 14		
	Vogue		14 x 14	16 x 16	36 x 4	38 x 6	16 x 8	18 x 10	24 x 12	26 x 14		
			16 x 16	18 x 18	12 x 5	14 x 7	18 x 8	20 x 10	30 x 12	32 x 14		
			18 x 18	20 x 20	8 x 6	10 x 8	20 x 8	22 x 10	20 x 14	22 x 16		
			20 x 20	22 x 22	10 x 6	12 x 8	24 x 8	26 x 10	24 x 14	26 x 16		
			24 x 24	26 x 26	12 x 6	14 x 8	30 x 8	32 x 10	25 x 14	27 x 16		
			10 x 2.25	12 x 4.25	14 x 6	16 x 8	36 x 8	38 x 10	30 x 14	32 x 16		
			12 x 2.25	14 x 4.25	16 x 6	18 x 8	12 x 10	14 x 12	20 x 16	22 x 18		
			14 x 2.25	18 x 4.25	18 x 6	20 x 8	14 x 10	16 x 12	24 x 16	26 x 18		
			10 x 3	12 x 5	20 x 6	22 x 8	16 x 10	18 x 12	30 x 16	32 x 18		
			6 x 4	8 x 6	22 x 6	24 x 8	18 x 10	20 x 12	25 x 20	27 x 22		
			8 x 4	10 x 6	24 x 6	26 x 8	20 x 10	22 x 12	30 x 20	32 x 22		
			10 x 4	12 x 6	28 x 6	30 x 8	24 x 10	26 x 12	40 x 20	42 x 22		
			12 x 4	14 x 6	30 x 6	32 x 8	30 x 10	32 x 12				
METAL	Castle	White Steel	6 x 6	8 x 8	12 x 4	14 x 6	18 x 6	20 x 8	30 x 8	32 x 10	10 x 11	12 x 13
	Expo	Black Steel	8 x 8	10 x 10	16 x 4	18 x 6	20 x 6	22 x 8	36 x 8	38 x 10	14 x 12	16 x 14
	Mountain	Brown Steel	9 x 9	11 x 11	18 x 4	20 x 6	22 x 6	24 x 8	40 x 8	42 x 10	16 x 12	18 x 14
	Regency	Silver Steel	10 x 10	12 x 12	20 x 4	22 x 6	24 x 6	26 x 8	42 x 8	44 x 10	18 x 12	20 x 14
	New Classic	Oil Rubbed Bronze	12 x 12	14 x 14	24 x 4	26 x 6	28 x 6	30 x 8	48 x 8	50 x 10	22 x 12	24 x 14
	Royal Palm		14 x 14	16 x 16	30 x 4	32 x 6	30 x 6	32 x 8	60 x 8	62 x 10	24 x 12	26 x 14
	Cobblestone		16 x 16	18 x 18	36 x 4	38 x 6	36 x 6	38 x 8	72 x 8	74 x 10	30 x 12	32 x 14
	Gothic		18 x 18	20 x 20	40 x 4	42 x 6	48 x 6	50 x 8	12 x 10	14 x 12	20 x 14	22 x 16
	Omni		20 x 20	22 x 22	42 x 4	44 x 6	60 x 6	62 x 8	14 x 10	16 x 12	24 x 14	26 x 16
	Santa Fe		24 x 24	26 x 26	48 x 4	50 x 6	72 x 6	74 x 8	16 x 10	18 x 12	25 x 14	27 x 16
	Victorian		10 x 2 1/4	12 x 4 1/4	60 x 4	62 x 6	10 x 8	12 x 10	18 x 10	20 x 12	30 x 14	32 x 16
	Contemporary		12 x 2 1/4	14 x 4 1/4	72 x 4	74 x 6	12 x 8	14 x 10	20 x 10	22 x 12	20 x 16	22 x 18
	Herringbone		14 x 2 1/4	16 x 4 1/4	8 x 6	10 x 8	14 x 8	16 x 10	24 x 10	26 x 12	24 x 16	26 x 18
	Pinecone		10 x 3	12 x 5	10 x 6	12 x 8	16 x 8	18 x 10	30 x 10	32 x 12	30 x 16	32 x 18
	Vine		6 x 4	8 x 6	12 x 6	14 x 8	18 x 8	20 x 10	36 x 10	38 x 12	25 x 20	27 x 22
	Mission		8 x 4	10 x 6	14 x 6	16 x 8	20 x 8	22 x 10	48 x 10	50 x 12	30 x 20	32 x 22
	Presidential		10 x 4	12 x 6	16 x 6	18 x 8	24 x 8	26 x 10	60 x 10	62 x 12	40 x 20	42 x 22
	Stone Wall											
	Vineyard											

FIND OUT HOW TO MEASURE IN FOUR SIMPLE STEPS: VISIT PAGE 3.

METAL	STYLES	FINISHES	SIZE / inside	SIZE / outside	SIZE / inside	SIZE / outside	SIZE / inside	SIZE / outside	SIZE / inside	SIZE / outside	SIZE / inside	SIZE / outside
	Scroll	Cast Iron	10 x 2 ¼	12 x 3 ½	14 x 4	16 x 5 ½	24 x 6	26 x 8	20 x 9	22 x 11	18 1/8 x 14 ¼	20 ½ x 16 5/8
		Grey Aluminum	12 x 2 ¼	14 x 3 ½	6 x 6	8 x 8	30 x 6	32 x 8	10 x 10	12 x 12	18 x 18	20 ½ x 20 ½
		Black Aluminum	14 x 2 ¼	16 x 3 ½	10 x 6	12 x 8	8 x 8	10 x 10	12 ¼ x 10 ¼	14 x 12	30 x 18	32 ½ x 20 ½
		Sun Gold Aluminum	8 x 4	10 x 5 ½	12 x 6	14 x 8	10 x 8	12 x 10	14 x 10	16 x 12	24 x 24	26 ½ x 26 ½
		Oil Rubbed Bronze	10 x 4	12 x 5 ½	14 x 6	16 x 8	12 x 8	14 x 10	12 x 12	14 ½ x 14 ½	29 5/8 x 29 5/8	32 x 32
		Aluminum	12 x 4	14 x 5 ½	22 x 6	24 x 8	14 x 8	16 x 10	14 x 12	16 ½ x 14 ½		
		Solid Brass										
	Square	Grey Aluminum	10 x 2 ¼	12 x 3 ½	14 x 4	16 x 5 ½	22 x 6	24 x 8	12 x 8	14 x 10	14 x 14	16 ½ x 16 ½
		Black Aluminum	12 x 2 ¼	14 x 3 ½	6 x 6	8 x 8	24 x 6	26 x 8	14 x 8	16 x 10	24 x 14	27 x 17
		Silver Aluminum	14 x 2 ¼	16 x 3 ½	10 x 6	12 x 8	30 x 6	32 x 8	10 x 10	12 x 12	30 x 14	33 x 17
		Oil Rubbed Bronze	10 x 4	12 x 5 ½	12 x 6	14 x 8	8 x 8	10 x 10	12 x 12	14 ½ x 14 ½	18 x 18	20 ½ x 20 ½
		Aluminum	12 x 4	14 x 5 ½	14 x 6	16 x 8	10 x 8	12 x 10	24 x 12	26 ½ x 14 ½		
		Black Steel										
		Grey Steel										
		Silver Steel										
		Rubbed Bronze Steel										

RESIN	STYLES	FINISHES	SIZE / inside	SIZE / outside	SIZE / inside	SIZE / outside	SIZE / inside	SIZE / outside	SIZE / inside	SIZE / outside	SIZE / inside	SIZE / outside
	Caspian	Unfinished	6 x 6	8 x 8	12 x 2 ½	14 x 4 ½	14 x 8	16 x 10	20 x 4	22 x 6	30 x 6	32 x 8
	Cosmo	Black	8 x 4	10 x 6	12 x 4	14 x 6	14 x 10	16 x 12	20 x 6	22 x 8	30 x 14	32 x 16
	Heritage Flat	White	8 x 6	10 x 8	12 x 6	14 x 8	14 x 12	16 x 14	20 x 20	22 x 22	30 x 18	32 x 20
	Heritage Decorative	Oil Rubbed Bronze	8 x 8	10 x 10	12 x 8	14 x 10	14 x 14	16 x 16	22 x 6	24 x 8	30 x 20	32 x 22
	Iron Ring		10 x 2 ½	12 x 4 ½	12 x 10	14 x 12	16 x 6	18 x 8	22 x 22	24 x 24	36 x 18	38 x 20
	Linear		10 x 4	12 x 6	12 x 12	14 x 14	16 x 12	18 x 14	24 x 10	26 x 12	36 x 20	38 x 22
	Ribbon		10 x 6	12 x 8	14 x 2 ½	16 x 4 ½	18 x 6	20 x 8	24 x 12	26 x 14		
	Square		10 x 8	12 x 10	14 x 4	16 x 6	18 x 14	20 x 16	24 x 14	26 x 16		
			10 x 10	12 x 12	14 x 6	16 x 8	18 x 18	20 x 20	24 x 24	26 x 26		

WOOD	STYLES	FINISHES	SIZE / inside	SIZE / outside	SIZE / inside	SIZE / outside	SIZE / inside	SIZE / outside	SIZE / inside	SIZE / outside	SIZE / inside	SIZE / outside
	Albion • Boxed • Circular	Maple	6 x 4	7 ¾ x 5 ¾	12 x 10	13 ¾ x 11 ¾	16 x 12	17 ¾ x 13 ¾	20 x 12	21 ¾ x 13 ¾	30 x 8	31 ¾ x 9 ¾
	Delusional • Excellence	Oak	6 x 6	7 ¾ x 7 ¾	12 x 12	13 ¾ x 13 ¾	16 x 16	17 ¾ x 17 ¾	20 x 14	21 ¾ x 15 ¾	30 x 10	31 ¾ x 11 ¾
	Fabulous • Groovy	Cherry	8 x 4	9 ¾ x 5 ¾	14 x 4	15 ¾ x 5 ¾	18 x 6	19 ¾ x 7 ¾	20 x 16	21 ¾ x 17 ¾	30 x 12	31 ¾ x 13 ¾
	Hipster • Interesting		8 x 6	9 ¾ x 7 ¾	14 x 6	15 ¾ x 7 ¾	18 x 8	19 ¾ x 9 ¾	20 x 18	21 ¾ x 19 ¾	30 x 14	31 ¾ x 15 ¾
	Jasper • Kodiak		8 x 8	9 ¾ x 9 ¾	14 x 8	15 ¾ x 9 ¾	18 x 10	19 ¾ x 11 ¾	20 x 20	21 ¾ x 21 ¾	30 x 20	31 ¾ x 21 ¾
	Lobby • More Lobby		10 x 4	11 ¾ x 5 ¾	14 x 10	15 ¾ x 11 ¾	18 x 12	19 ¾ x 13 ¾	24 x 6	25 ¾ x 7 ¾	30 x 30	31 ¾ x 31 ¾
	Naughty • Obo • Proper		10 x 6	11 ¾ x 7 ¾	14 x 12	15 ¾ x 13 ¾	18 x 14	19 ¾ x 15 ¾	24 x 8	25 ¾ x 9 ¾	32 x 6	33 ¾ x 7 ¾
	Quirky • Radical		10 x 8	11 ¾ x 9 ¾	14 x 14	15 ¾ x 15 ¾	18 x 16	19 ¾ x 17 ¾	24 x 10	25 ¾ x 11 ¾	32 x 8	33 ¾ x 9 ¾
	Staggered • Twisted		10 x 10	11 ¾ x 11 ¾	16 x 4	17 ¾ x 5 ¾	18 x 18	19 ¾ x 19 ¾	24 x 12	25 ¾ x 13 ¾	36 x 18	37 ¾ x 19 ¾
	Understated • Venty		12 x 4	13 ¾ x 5 ¾	16 x 6	17 ¾ x 7 ¾	20 x 6	21 ¾ x 7 ¾	24 x 20	25 ¾ x 21 ¾	36 x 20	37 ¾ x 21 ¾
	Wunderbar • X-Rated		12 x 6	13 ¾ x 7 ¾	16 x 8	17 ¾ x 9 ¾	20 x 8	21 ¾ x 9 ¾	24 x 24	25 ¾ x 25 ¾		
	Ya-Ya • Ziggy		12 x 8	13 ¾ x 9 ¾	16 x 10	17 ¾ x 11 ¾	20 x 10	21 ¾ x 11 ¾	30 x 6	31 ¾ x 7 ¾		

BASEBOARD COVER SPECIFICATIONS

Styles/Lengths/Accessories

BASEBOARD COVERS	STYLES	FINISHES	SIZE	SIZE	ACCESSORIES	ACCESSORIES	ACCESSORIES	ACCESSORIES
	Premium / Tall	White	3 ft Panel	6 ft Panel	Right Closed Endcap	Right Open Endcap	Coupler	Inside Corner 135 °
		Raw Galvanized Steel	4 ft Panel	7 ft Panel	Left Closed Endcap	Left Open Endcap	Inside Corner 90°	Outside Corner 135°
			5 ft Panel			Zero Clearance Endcap	Outside Corner 90°	Wall Brackets
	Basic	White	3 ft Panel	5 ft Panel	Right Closed Endcap	Left Closed Endcap	Coupler	Inside Corner 90°
			4 ft Panel	6 ft Panel				Wall Brackets
	Elliptus	White	3 ft Panel	6 ft Panel	Right Closed Endcap	Right Open Endcap	Coupler	Wall Brackets
		Raw Galvanized Steel	4 ft Panel	7 ft Panel	Left Closed Endcap	Left Open Endcap	Inside Corner 90°	
			5 ft Panel			Zero Clearance Endcap		



WOOD COVERS

Discover your perfect design

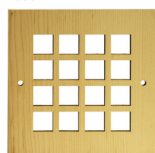
With over 30 patterns to choose from, our laser cut wood covers are the ultimate choice for anyone looking for something unique. Don't see quite what you're looking for?

We can help. We can laser cut anything that you can draw, or you can work with our design team to produce your perfect design.

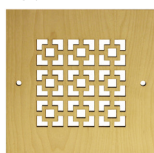
WOOD TYPES

FINISHES

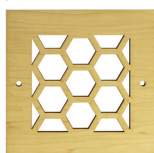
LOBBY



ALBION



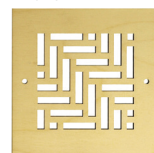
JASPER



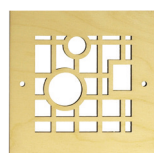
OBO



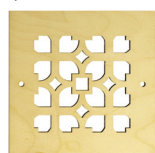
TWISTED



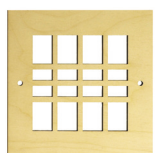
STAGGERED



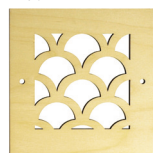
QUIRKY



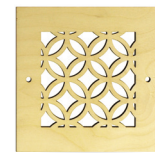
UNDERSTATED



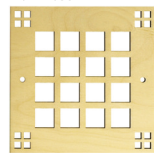
NAUGHTY



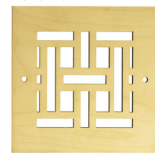
HIP



MORE LOBBY



WUNDERBAR



ZIGGY



GROOVY



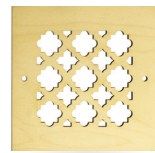
PROPER



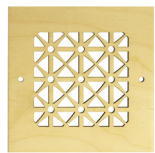
FABULOUS



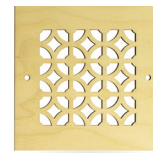
X-RATED



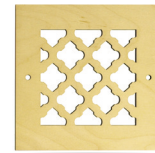
DELUSIONAL



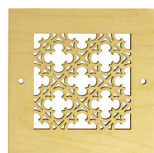
CIRCULAR



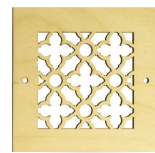
VENTY



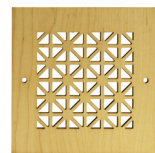
YAYA



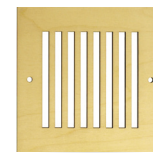
EXCELLENCE



BOXED



INTERESTING



KODIAK



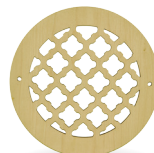
RADICAL



EXCELLENCE ROUND



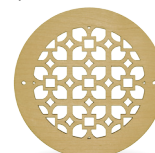
VENTY ROUND



LOBBY ROUND



QUIRKY ROUND



INTERESTING ROUND



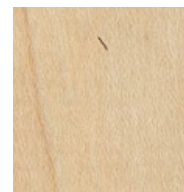
RADICAL ROUND



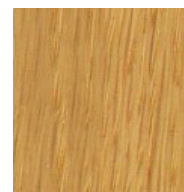
Our 30 standard grille patterns can be cut in any size that you need.



Cherry



Maple

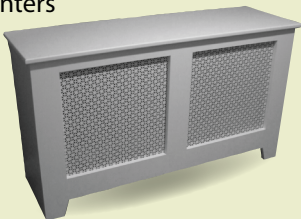


Oak

Choose from pre-sanded oak, cherry and maple. Paint or stain as desired.

QUICK FACTS**Need cabinet door panels for your kitchen or home entertainment center?**

We can cut any size and any shape decorative wood panel that you need. Our laser machining centers vaporize wood at the speed of light leaving razor thin cut margins creating identical panels and patterns.

**NEED A DAMPER OR FILTER FRAME FOR YOUR WOOD COVER?**

Check out our wood accessories on page 14.





VENT COVER ACCESSORIES

Because they should perform as beautifully as they look

From diffusers to air deflectors, mesh backing to concealment louvers, our cover accessories insure your covers not only look exquisite, but function flawlessly as well.

Each of our cover accessories is designed to fit behind our vent covers to control air flow, increase heating and cooling efficiency, conceal unsightly ductwork and ensure the optimal function of your vents.

ACCESSORIES

WOOD

- Air Damper Louver
- Return Air Filter Frame
- Flush Mount Magnetic Frame

RESIN

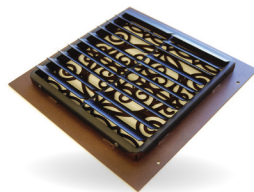
- Air Damper Louver
- Return Air Filter Frame

METAL

- Air Damper Louver
- Return air filter frame
- Concealment Louver
- Air Deflector
- Mesh backer
- Speaker cloth
- Flush Mount Cans

FOR MORE INFO...

On our cover accessories including sizing and specifications please call
844-567-5050.



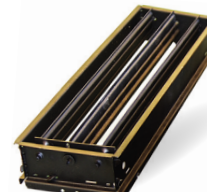
CONCEALMENT LOUVER



OBD LOUVER



AIR DEFLECTOR



LOUVER



MESH BACKER





public + commercial

Vent and Cover provides full capability of quality handcrafted commercial products with a wide range of finish options and designs.

Our products are built strong and designed to last –meeting the most demanding requirements of all architectural and HVAC industry standards.

Our experience with commercial projects worldwide includes Boutique hotels, Country Clubs, Restaurants/Pubs, Places of Worship and Public/Government buildings.

Contact us today to
talk about your next
project specifications:

844-567-5050

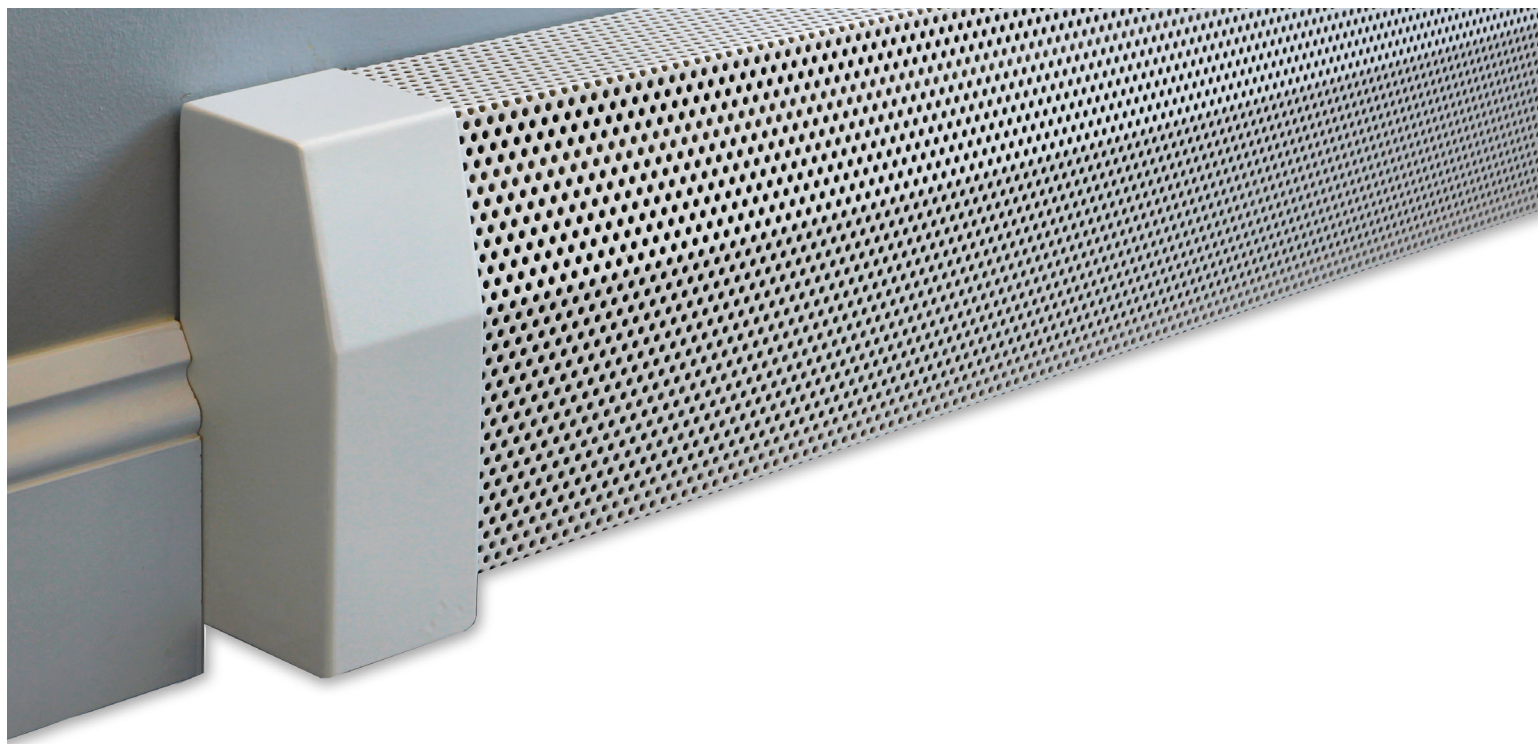


BASEBOARD COVERS - Premium and Premium Tall

The easiest way to renovate old baseboard heaters

Our unique easy slip-on baseboard heater covers instantly transform any ugly old baseboard heater into a clean, modern and elegant architectural highlight while maximizing airflow around the

heating element. The one size fits most profile doesn't require tools or hired help to install and the results will amaze.



PARTS / ACCESSORIES



CLOSED ENDCAP



OPEN ENDCAP



ZERO CLEARANCE
ENDCAP



COUPLER



INSIDE CORNER



OUTSIDE CORNER



WALL BRACKETS

OLD BASEBOARD COVER

Rusted, warped
unattractive cover

NEED A CUSTOM LENGTH?

Cover panels can be custom cut to any length you require. Simply order the next size up and send us your exact length requirements and we will cut them for you at no extra charge.

If your required lengths are slightly larger than our standard lengths, endcaps can easily slide back and forth once snapped on giving you a full 3" additional length from the two endcaps.

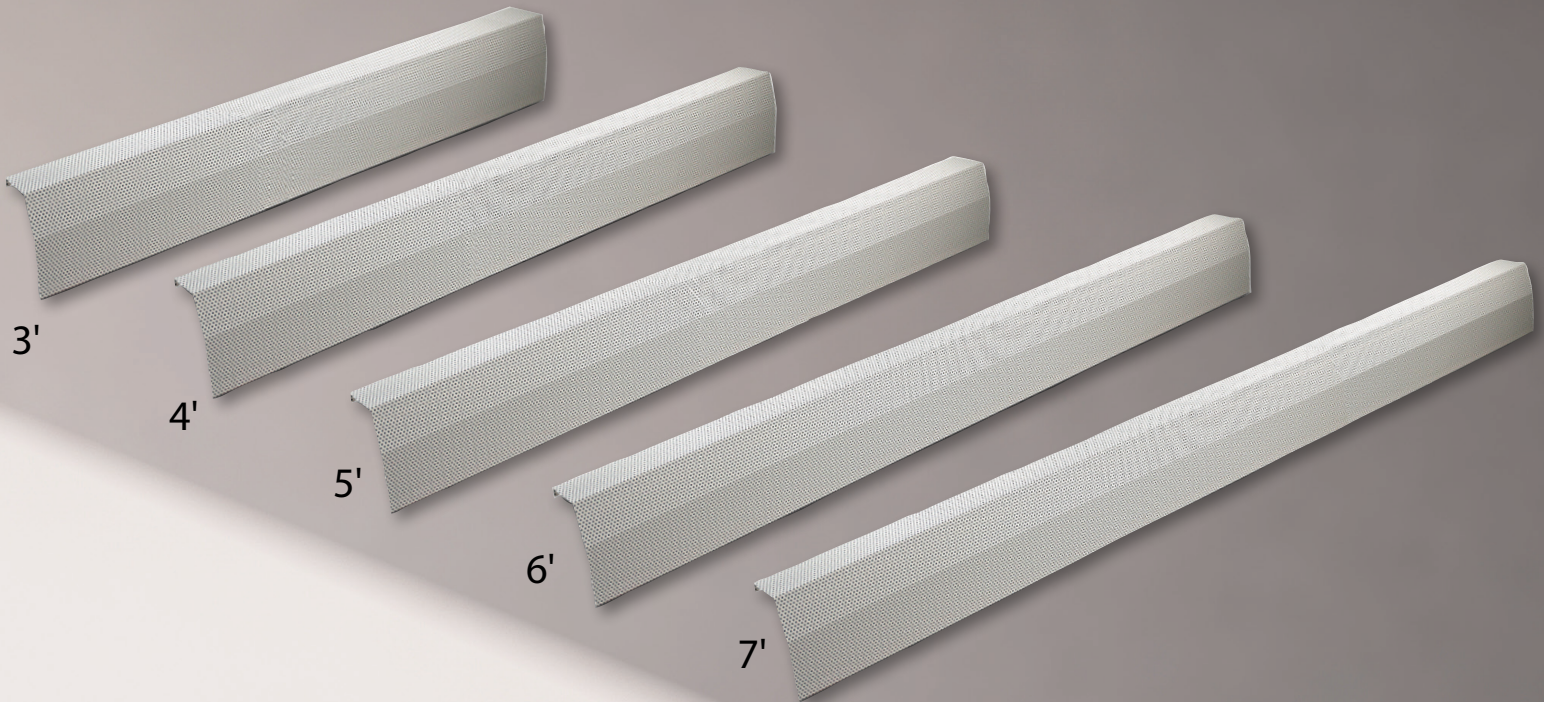


Baseboard Covers

DID YOU KNOW >>>

Our Premium baseboard covers also come in a tall profile option--commonly found in schools, office buildings and other institutions.

Our Tall panel is a full 2" taller than our standard size baseboard cover.



GALVANIZED STEEL

22 gauge, guaranteed not to rust, 1/8" holes ensure optimal air flow

POWDER COATED

Semi-gloss white finish

HEIGHT

6 3/4" panel height

END CAPS

Closed, Open and Zero Clearance



CALL NOW TO ORDER
844-567-5050



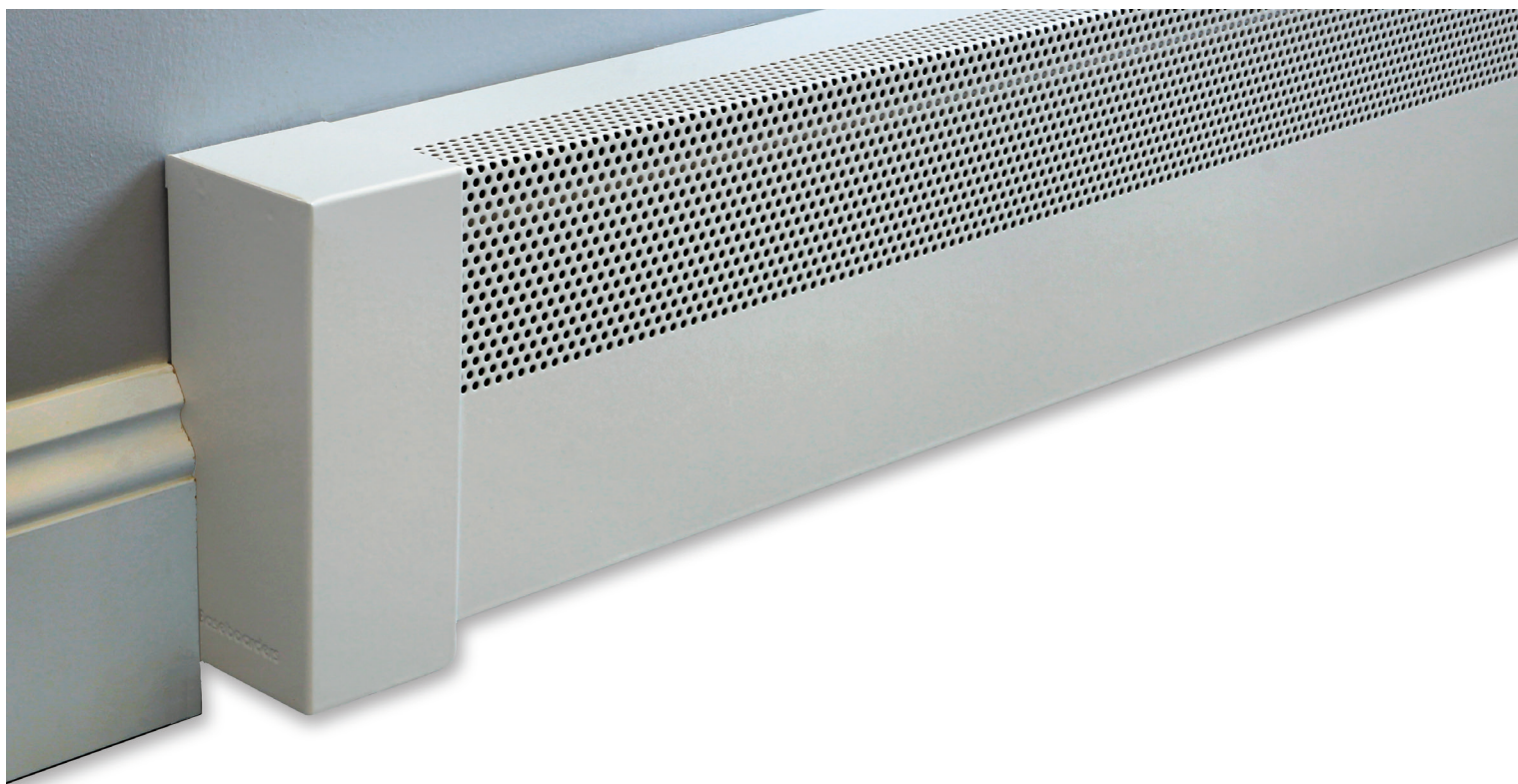
BASEBOARD COVERS - Basic

Simple contemporary profile, Maximum value

This back to basics, no-frills version of our popular premium baseboard cover has a lighter 24 gauge steel composition with 22 gauge accessories. The result.

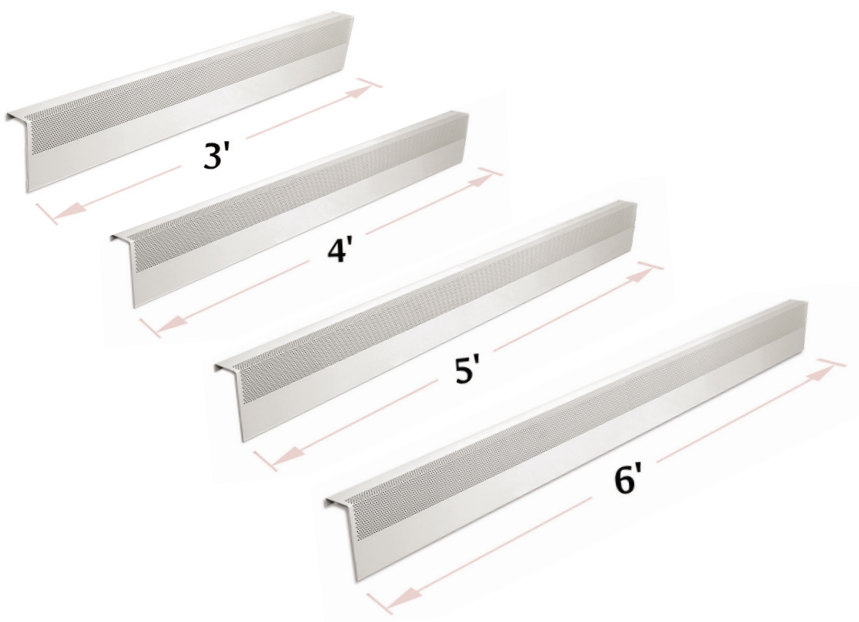
A low-cost baseboard cover solution with the same great easy-to-install application that will look remarkable.

Our Basic cover panels are available in lengths of 3, 4, 5 and 6 feet and accessories include basic closed endcaps, as well as our coupler and inside corner pieces for joining two or more panels together.



PANELS

ACCESSORIES



CLOSED ENDCAP

COUPLER

90° INSIDE CORNER

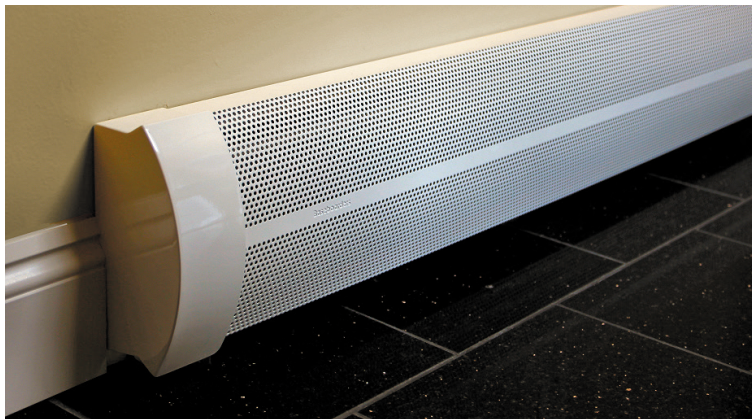
BASEBOARD COVERS - Elliptus

Baseboard Heaters Have Never Looked This Good

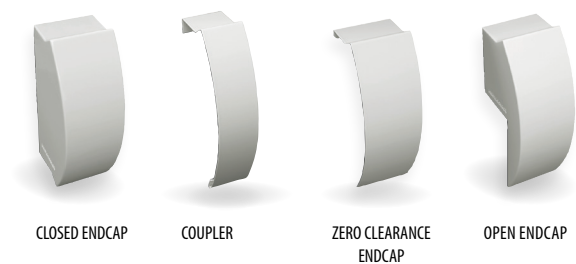
Introducing the Elliptus. The Elliptus is the first baseboard radiator cover to use the gentle curve of an ellipse to add elegance to baseboard heaters. The Elliptus product line introduces the notion that baseboard heaters can be considered one of the homes architectural highlights.



The Elliptus is the finest baseboard heater cover we make. When you consider the lifetime warranty this hand crafted product comes with, there is little doubt a new standard has been set.



PARTS / ACCESSORIES



CLOSED ENDCAP

COUPLER

ZERO CLEARANCE
ENDCAP

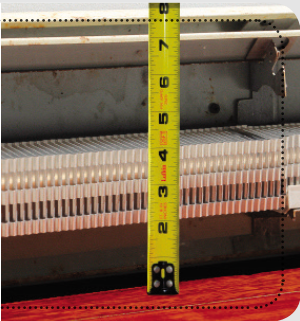
OPEN ENDCAP

How to Measure Baseboard Covers

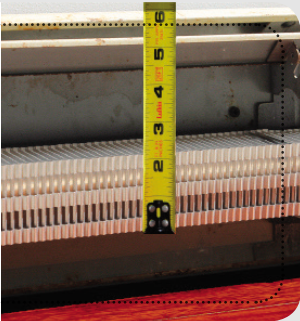
Retrofit Guide

We use a simple one piece, one-size-fits-most approach that will fit over 95% of all existing baseboard heaters.

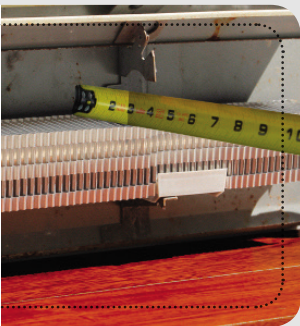
- 1** Measure the distance between the finished floor and the top of the baseboard heater. Objective: Between 7-1/2" and 9".



- 2** Measure the distance between the bottom of the finned tube heating element and the top of the baseboard heater. Objective: Between 5" and 6-3/4".



- 3** Measure the distance between the outside face of the finned tube heating element and the back plate. Objective: 3-1/4" or less.



Note: For the few circumstances where your measurements are either too tall or too short, we offer some easy work-around solutions. Contact us for details.



◀ Scan the QR code with your phone and watch the installation video.

NEW
FOR 2017

AS SEEN ON:



As seen on:

bobvila



**RADIANT &
HYDRONICS**

Qualified
Remodeler

Vent+Cover

1-844-567-5050

WWW.VENTANDCOVER.COM